

TO PROVIDE AND STIMULATE FOCUS ON THE ARTS

www.mcmurrayartleague.com

Dear McMurray Art League,

As your **MAL Co-Presidents**, we have had the privilege of being at the forefront of some major changes this 2023-24 fiscal year. If you have not been able to come to the **Studio** yet, make sure you stop by. Or better yet, attend an **event or class** soon! To celebrate the **STUDIO AND GALLERY TRANSFORMATION, MAL members** submitted paintings to exhibit in the **"SPRING INTO THE FUTURE" STUDIO EXHIBIT** which opened with a gala celebration on Friday 4/26 and ran through the weekend. If you couldn't attend, here are some pictures to review.



[McMurray Art League](https://www.facebook.com/mcmurrayartleague) was THE place to be Friday night and Saturday 11-1! The best combo- the studio filled with gorgeous art, delicious food and good friends and visitors. Thanks to everyone who participated! There are more pictures on Facebook: [\(20+\) Facebook](https://www.facebook.com/mcmurrayartleague)



Upcoming Events

NEXT GENERAL MEETING
MAY 9, 2024 7:00 PM

"NEXT ART TALK"

June 2 @ 3:00 on Norman
Rockwell by Jan Pini

If someone would like to do an **ART TALK**, please contact Lolly Owens.

NEWS IN MAL

Important Announcement
Per our arrangement with Mosites, we need to make sure we abide with their request that we park away from spaces that their other tenants need.

All MAL members and guests visiting the **Studio** must park between Key Bank and the Dollar Tree Store.

We are allowed to off-load materials temporarily parking near the **Studio**, but we need to move all vehicles to the designated spaces after off-loading. We are working with Mosites to address parking for members with mobility or accessibility problems.

SPRING INTO THE FUTURE GALLERY EXHIBIT -

Visit the **Studio and Gallery** by June 2 to view the dynamic art created by **38 MAL member artists!** Here are a few images of pieces in the show. Seeing the show in person is highly recommended!



SANDY CONLEY



AND JAN PINI – CO-PRESIDENTS

ARC 7 EXHIBIT

The **Arc 7 exhibit** is hung and ready for viewing. Stop down to Chicco Baccello for a delicious breakfast or lunch and view the impressive show. **Arc** is located at 111 W. Pike St., Canonsburg, PA 15317 and is open during breakfast and lunch, Monday through Saturday.

STUDIO GALLERY EXHIBITS - MAL

We are going to be offering the **Gallery to MAL member artists** to have their own shows for 2-4 week timeframes. Possibly 2-3 artists could do a show together. There will be a fee (proposed \$25/week and a 15% commission on sales). You would be responsible for your own "Opening Reception." **MAL** would do some marketing and you would also do your own to generate enthusiasm within your network.

Several artists have already expressed interest and we will be putting together a six month schedule for June - December. Note: November and June or July may already be taken. Since this is a new concept, still in the planning stages, **please let me know if you are interested (without commitment)**. Lisa Markowski 412-302-6258, markomosaics@gmail.com.



LISA MARKOWSKI

SAVE THE DATES!

Betty Roseborough has been busy getting **MAL** on the books for several venues. Save the dates for these exhibits:



- Mt. Lebanon Library, upper hallway – August, 2024
- St. Clair Hospital, along the entrance from the parking garage – September and October, 2024
- St. Clair Hospital, along the entrance from the parking garage – March and April, 2026
- First Annual Bethel Park Arts and Music Festival – July 27, 2024

JAN PINI

MAL STUDIO DAYS - CALL FOR STUDIO ARTIST/HOSTS

We are in dire need of Studio Hosts!!! Just as a reminder, **Studio Hosts** open the **studio and gallery** and welcome visitors. They also handle any sales that might happen. Don't panic, there is an instruction book and lots of phone numbers to call if you need help. We are trying to raise the awareness of our lovely **Studio and Gallery** by being open more often to business. **Think of it as a chance to have FOUR WHOLE HOURS to work on your latest art project!** The Thursday and Friday shifts are 11 AM to 3 PM and 3 PM to 7 PM., and Saturdays and Sundays the shift is 11 AM to 3 PM. You can sign up on the website at <https://www.mcmurrayartleague.com/Studio-Hosts-Calendar>. Just log in and choose your day and time slot to register!



JENNIE MARTIN



LANA SAKHAROVA

FEATURED ARTIST AT THE STUDIO: LAURA SIPPOS



Laura Sippos is the **FEATURED ARTIST** in the **Gallery** during the month of May. Laura is a teaching and working artist who creates a wide variety of work in 2D mediums. Most recently her focus has been on mixed media work with upcycled materials. Teaching art is where Laura truly comes alive. She encourages students to see the world in a new way and express themselves freely. It is her goal to continue to create more opportunities in the community to share her belief that anyone can create beautiful and meaningful art.

PETERS TOWNSHIP LIBRARY – "EVOLVE" APRIL 17 - JUNE 19



EVOLVE - April 17 - June 19, 2024 MAL artists Betty Roseborough, Beverly Fredericks, Angie Brandon, Nancy Kenney, Peter Stamoolis, Kimberly Adams, Sandy Conley, Jan Pini and James Tobin have work in this show. Often the theme of the library shows have been rather "loosely interpreted." But **EVOLVE** has been inspirational for all the included works. Stop by the PT library to view a wonderful show.



If you wish to exhibit your work at the PT Library, you may enter up to three 2-dimensional pieces no larger than 24" top to bottom. There is no entry fee but there is a 15% commission on sold works (10% is donated to the library and 5% to **MAL**). Contact Sandy Conley conley1973@verizon.net or register on **MAL website**.

SANDY CONLEY

SPRING JURIED SHOW AT THE GALLERIA

Our **Spring Juried Show "Springing Ahead"** at **The Galleria of Mt. Lebanon** was a rousing success! We sold \$1,414.00 worth of art, including a whopping *seven* hanging pieces. Our juror, Jim Sulkowski, was so impressed with the quality of work that he begged to be able to hand out more Honorable Mention awards. So we said, "OK!" Here are the award winners.

WINNER	TITLE
FIRST PLACE Andrea LaNasa	<i>Young Linnea</i>
SECOND PLACE Sandra Conley	<i>Iraqi Date Kleicha Cookies</i>
THIRD PLACE Bill Ceriani	<i>Ironweed and Goldenrod</i>
Honorable Mentions	
Gina Judy	<i>Mansfield JailBirds</i>
Diane Murray	<i>Summer Day</i>
Jan Pini	<i>Misha</i>
Betty Roseborough	<i>Rails to Trails</i>
Anita Sandefur	<i>Arty-Choke</i>
People's Choice Award	
Judé Ernest	<i>Path</i>
Donna Reilly	<i>Hillside</i>
Peter Stamoolis	<i>Tree Transitions</i>

Spring Show Sponsors

We were able to offer more valuable awards than originally planned due to our generous sponsors who came through with merchandise and certificate awards. These sponsors were contacted by Rosetta Volpe-Dufalla, our Corresponding Secretary. Thank you Rosetta, and please remember to patronize these wonderful businesses.



Armadillo Art & Craft
<https://www.armadilloart.com/>



Golden Artist Colors
<https://goldenartistcolors.com>



Blick Art Materials
<https://www.dickblick.com/>



Artist & Craftsman Supply
<https://artistcraftsman.com/>



M. Graham & Co.
<https://mgraham.com/>



The Frame Dame
framedameart@gmail.com



Painting, Drawing and Art Supplies Store (cheapjoes.com)

Here are some pictures of the Winners of the Spring Juried Show.



First Place Winner Andrea LaNasa



Second Place Winner Sandy Conley



Honorable Mention Anita Sandefur



Honorable Mention Jan Pini

MAL DIRECTORY/MEMBERSHIP/NOMINATIONS by LESLIE BALDWIN

MEMBERSHIP REPORT:

MAL currently has 94 members, and welcomes new and renewed members Kim Adams, Vivian Dibrell, Doris Dumrauf, Terrence Ensign, Deborah Greenawald, and Donna Guillen.

- Currently working in an abstract impressionistic style on large canvases in oils and acrylics, **Kimberly Adams** is expanding her artwork to textiles. Please visit Kimberly's website: <https://kimberlybadams.com>.
- **Vivian Dibrell** is retired from owning and operating a custom drapery and home furnishing business. Her painting media interests include Acrylic, Digital Art, Fiber, Ink, Mixed Media, Pastel, Polymer Clay, and Watercolor. Recently she has been creating bowls and baskets using nautical rope and various fibers which she sells through Etsy.
- **Doris Dumrauf** is an award-winning nature photographer, author, and public speaker. Her photos have been published in several magazines, books, calendars, and newspapers. She is the author of four picture books about birds and wildlife habitats.
- **Terrence Ensign** is interested in helping with our Fall and Spring Exhibitions.
- **Deborah Greenawald** has rejoined **MAL**. She enjoys painting in Watercolor.
- **Donna Guillen** has a variety of artistic interests, working in Acrylic, Pastel, Pottery, Watercolor and Woodcarving.

It's great to see the involvement of new members as we expand our **in-studio** activities!

IMPORTANT INFORMATION for those of you who have joined the **league** after January 1, 2024: **MAL's** fiscal year runs from June 1 through May 31. The \$17.50 that brand new members paid for membership between January 1, 2024, and May 31, 2024, entitles them to receive all **MAL member** privileges: news, class discounts, and exhibition opportunities until May 31, 2024.

However, **ALL MAL MEMBERS** will be receiving a reminder soon to renew for \$35.00 to be considered a full, active member for the 2024-2025 fiscal year. Payment of the active member renewal rate of \$35 after June 1, 2024, will allow members to continue to receive **MAL member** privileges through June 1, 2025.

Renewing your **MAL membership** at the active member rate of \$35.00 this summer will ensure that you'll continue to receive all **MAL notifications, class discounts, and exhibition opportunities** from June 1, 2024, through May 31, 2025. Thank you and we look forward to seeing you at our **general membership meeting** on May 9, 2024, 7:00 – 9:00 P.M.

DIRECTORY REPORT

An updated 4-28-2024 directory was placed in **MAL studio**.

NOMINATIONS REPORT

Slate of Executive Officers Candidates:

CO-Presidents: Sandra Conley, Jan Pini
Vice President: Leslie Baldwin
Treasurer: Jan Pini
Recording Secretary: Michalina Pendzich
Corresponding Secretary: Rosetta Volpe-Dufalla

New and Needed Committee Chairs 2024-2025:

Many thanks to Lana Sakharova and Jennie Martin for taking on the roles of **Co-Studio Managers**. Margaret (Peg) Smith will be **Class Coordinator**. For **Exhibitions, Other**, our Chair will be Betty Roseborough. Our **Featured Artist Coordinator** will be Laura Sippos. Our **Spring Juried Exhibition** 2025 Chair will be Gina Judy. **Newsletter Chair** will be Peter Stamoolis.

Open Positions:

We still need Chairs **for Fall Exhibition** 2024, a **Hospitality Co-Chair**, a **Meetings Presentation Coordinator**, and **Publicity Chair**. **MAL** has launched so many exciting new initiatives; we need your help to keep things going strong!

If you have an interest in any of these positions contact Leslie Baldwin at lesbld@verizon.net.



LESLIE BALDWIN

2024 MEETING DATES

The meetings will be in person. Please follow our Mosites requested parking rules, and please make sure you follow CDC Guidelines if you attend in person.

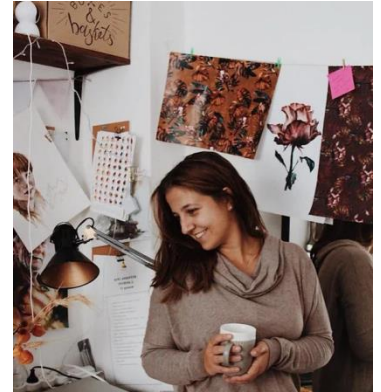
Board Meetings 2:00 PM Third or fourth Mondays	General Meeting (2nd Thursdays)	Speaker/Presenter
April 15, 2024	May 9, 2024 7:00 PM	Speaker is Masha Geht – International Water Color exhibitor. https://www.mashageht.com/
May 20, 2024		

MEET OUR MAY PRESENTER – MASHA GEHT MAY 9 AT 7:00 PM



Masha Geht graduated from the University of Design and Technology in Moscow, and has worked as an illustrator and designer for Russian fabric and wearable companies. She has been a freelance artist since 2015 specializing in graphic works and watercolor, and has participated in international exhibits around the world. Masha says "Specializing in academic drawing at the university, I explore my own way. I like the natural look of a person, with wrinkles that emphasize his personality, and not idealization of a person".

[Design services and Art | Apokorina \(mashageht.com\)](http://Apokorina (mashageht.com))



UPCOMING CAFÉS

Yay! We have the return of **CAFÉS (Creative Arts for Everyone)**! These are short one-day arts and crafts sessions offered by **MAL members** who want to share a fun project with you. The only charge is \$5 to the League to keep the lights on and sometimes a materials fee (the presenter is unpaid). Our popular **Art Talks** come under the umbrella of **CAFÉS**. Upcoming **Art Talks** are June 2 at 3:00 on **Norman Rockwell** presented by Jan Pini (yikes! I better start studying!) and June 23 at 3:00 on **Jackson Pollock** by Peter Stamoilis. We also have snacks and wine at **Art Talks**! A really fun one coming up is by Sandy Conley to celebrate **Cinco de Mayo** on May 5, 11-3. Check them all out on the website at <https://www.mcmurrayartleague.com/CAFes>. That's where you can also purchase access to the videos of past **Art Talks** for the low, low price of \$5. If you pay by PayPal, you'll get an automatic email right away with the link to the video. If you pay by check you'll have to wait for the check to be received before you get the email with the link. Check out the **Art Talks** as they are entertaining and informative!



JAN PINI

UPCOMING CLASSES – 2024

The minimum number of participants must be met a week prior to the first class or the classes will be canceled. This is a courtesy to our instructors who prepare handouts/class instruction for the number signed up. Their time is valuable....they could be painting a masterpiece! **For more information about a class contact** Class Coordinator, Betty Roseborough, at classcoordinator@mcmurrayartleague.com.

You may register for a class on the **MAL Website** by viewing the class under the **Calendar** OR the **Events** menu option and clicking Register (register for the series or for each day separately) OR you may notify the temporary **Class Registrar, Jan Pini**, via email at classregistrar@mcmurrayartleague.com or 724-518-5585 and ask to be placed on the class list for the classes and dates desired. After you register, you can pay on the **MAL Website** or mail a check made out to **McMurray Art League** for the cost of the classes to the registrar: Jan Pini; 103 Crabtree Ct.; Venetia, PA 15367. In the Memo section of your check, note which instructor classes and dates the check covers. You will receive an email confirmation of your registration.

Date 2024	Class (In-person following CDC Guidelines)	Time	Member – Non Member
May 5,	CINCO de MAYO FUN! Make beautiful tissue paper flowers and/or do a painting in the style of Frida Kahlo	11:00-3:00	\$5.00 per person
May 7,14	Sue Levy, Beginner-Intermediate Watercolor (Register)	10:00 - 2:00	Member \$35 day/ Non-Member \$40 day
May 15,16	Diane Grguras, Plein Air Pastel (Register) Supplies	10:00 - 4:00	Member \$45 day/ Non-Member \$50 day
May 30	Lisa Markowski, Micro Mosaic Jewelry (Register)	10:00 - 2:00	Member \$35 day/ Non-Member \$40 day

PREVIEW OF MAL CLASSES 2024

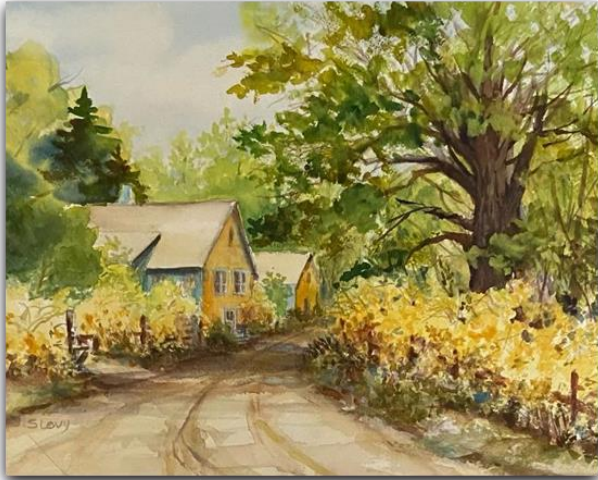
CINCO de MAYO FUN! Sunday, May 5th 11–3

Come to the Studio to make beautiful tissue paper flowers and/or do a painting in the style of Frida Kahlo. Snacks Included.

\$5.00 per person/\$5.00 materials fee if you use studio materials for painting. (You can bring your own supplies too!)



SUE LEVY - BEGINNER TO INTERMEDIATE WATERCOLOR ARTISTS MAY 7, 14



A great class for beginner to intermediate watercolor artists! To the artist, Spring is a palette of color explosion to paint and we immediately think of what paint colors to mix and the techniques to capture these vibrant colors. Drawing is important to plan the design and composition using a sketchbook, then the real fun begins when we put the drawing on paper and begin to paint. Come join me on this art adventure of learning to paint spring by learning the following watercolor composition and techniques, perspectives, depth, atmosphere and values.

DIANE GRGURAS PASTEL ARTIST – MAY 15, 16

Diane Grguras has a B.S. in Medical Illustration from The Ohio State University and an A.S. in Scientific Illustration from San Bernardino Valley College (CA). She completed an internship in medical illustration at the Veterans Administration Medical Center in East Orange, New Jersey. She has worked as a graphic designer and illustrator and is a member of the Pittsburgh Pastel Artists' League, the North Hills Art Center, and Cranberry Artists Network. She is an associate member of the Pastel Society of America. She has taught art classes for adults and children. Diane says: "Day 1 – I'll show you how I begin with my image(s) and will take it through composition, development, finishing, and framing. I'll demonstrate the steps and help each artist as they make decisions in each of these steps. There will be plenty of time for Q&A about the selection of images, materials, and framing. Day 2 will be an outdoor day, weather permitting. I'll show you how I choose a view out of the massive amount of input you see out in the 'real world', do a short demo, and help each artist as they compose and develop their painting." Jan Pini has offered her backyard for the outside day (landscaper permitting...) and (bonus) lunch is included!



Jan Pini has offered her backyard for the outside day (landscaper permitting...) and (bonus) lunch is included!

[Diane Grguras Fine Art](#)



Lisa Markowski, Micro Mosaic Jewelry May 30



Create your own micro mosaic jewelry! Choose your favorite colors and start designing. A tempting array of materials will be provided including many types of glass: Filati, Millifiori, rods, stained glass, Italian smalti and numerous other embellishments.

We will discuss how to design, cut and use materials and to securely place the small pieces. You can make either square, round, or rectangle silver plated pendants or earrings. New sizes and shapes will be available. All tools will be provided. The supply fee, payable to the instructor, is \$20 for each piece you make. Come have fun and leave with a finished piece to wear or gift.



If you have any of the following, please bring them:

- Tweezers
- Wheeled glass nippers
- Jewelry files

BETTY ROSEBOROUGH

POLICIES AND BYLAWS CHANGES

The **Bylaws Committee** met and reviewed the changes we are proposing to the **Policies and Bylaws**. The **Policies** had just a few changes but the **Bylaws** had a lot of changes related to the Committees. Many of the changes show up that way because we alphabetized the positions but there are some significant changes. Per discussion at the recent **Board** meeting we eliminated **Historian** and added **Members at Large** (up to 3) and several other positions. Please review the documents below and offer any suggestions for changes. Note that the Track Changes versions show all the changes and is tricky to read so you also have a "clean" version with the changes applied. We will need to **VOTE** on these changes at the next **General Meeting** on May 9.

[MAL 2024 05 Policies Proposed Changes.pdf](#)

[MAL 2024 05 Policies Proposed Changes Applied.pdf](#)

[MAL 2024 05 Bylaws Proposed Changes.pdf](#)

[MAL 2024 05 Bylaws Proposed Changes Applied.pdf](#)

Linda Saksa, Sandy Conley and Jan Pini

Bylaws Committee, McMurray Art League

NEWS AROUND TOWN

- **Bethel Art Guild** meets in the Bethel Park Community Center on the first Thursday of the month. Artists will participate in the Spring Show at the Gallaria. This month, one member, Bea Kilwein will have her works displayed on the wall in the Bethel Park Community Center.
- **South Arts Pittsburgh** meets in the Schoolhouse in Bethel Park. The members now have an exhibit in the lobby, which is open most days for the coffee shop, and The Historical Society of Bethel Park has a museum room in the building. The current works are featuring artwork from the board members. The Schoolhouse is located at 2600 South Park Road, Bethel Park, PA 15102. An Art festival is being planned for later this summer.
- **The Pittsburgh Watercolor Society** has completed the screening for new members this year. Their Member's Show will be from April 13 through May 25, 2024 at the Latrobe Art Center. The address is 819 Ligonier St, Latrobe PA 15650.



NANCY HOKAJ

HAVE YOU EVER WONDERED WHAT HAPPENS TO THE STUFF LEFT ON MT. EVEREST?

Mountain climbers are carrying all kinds of gear. As they make their ascent up the mountain, stuff gets left behind, creating its own form of pollution. Mt. Everest is plagued by garbage from these mountain climbers. See how these creative Nepali women are fixing the problem

[Mt. Everest trash turned into handmade crafts by Nepali women : Goats and Soda : NPR](#)



PAUL REBHOLZ



SOME OF YOUR BOARD MEMBERS



Jan Sandy Betty Leslie Michalina Lisa Linda and Anne
Past Presidents

Here are some of the people that make **McMurray Art League** work so well for you and me. If you take advantage of any of the benefits that the League has to offer, then please consider volunteering some of your time to ensure the long-term viability of our League!

Thank you ladies for your hard work and dedication.

THE McMURRAY ART LEAGUE *Officers and Chairs – 2023 – 2024*

Co-Presidents: Sandy Conley and Jan Pini
president@mcmurrayartleague.com

Vice-President: Leslie Baldwin
vicepresident@mcmurrayartleague.com

Recording Secretary: Michalina Pendzich
mpendzich54@yahoo.com

Corresponding Secretary: Rosetta Volpe-Dufalla
corresponding@mcmurrayartleague.com

Treasurer: Jan Pini
treasurer@mcmurrayartleague.com

Art League Liaison: Nancy Hokaj
nl.hokaj@gmail.com

By-Laws: Linda Saksa, Anne Trimble

Class Coordinator: Betty Roseborough
classcoordinator@mcmurrayartleague.com

Class Registrar: Jan Pini
classregistrar@mcmurrayartleague.com

Directory: Leslie Baldwin

Exhibit Co- Chairs (Fall): **OPEN**

Exhibit CO-Chairs (Spring): Jan Pini and Betty Roseborough

Featured Artist: Laura Sippos
lsippos@yahoo.com

Hospitality: Lana Sakharova

Membership: Carol Aurin
membership@mcmurrayartleague.com

Newsletter: Paul Rebholz
newsletter@mcmurrayartleague.com

Nominations: Leslie Baldwin

Past President: Anne Trimble, Linda Saksa

Peters Twp. Library: Sandy Conley
Conley1973@verizon.net

Program: Betty Roseborough
erosie5@aol.com

Publicity: **OPEN**

Scholarship: Carol Aurin
scholarship@mcmurrayartleague.com

Standards: Leslie Baldwin, Gina Judy

Studio Exhibits: Lisa Markowski
Lisa_mark95@MSN.com

Webmaster: Jan Pini
webmaster@mcmurrayartleague.com

McMurray Art League
4069 Washington Road
McMurray PA 15317
www.mcmurrayartleague.com